

Fork Positioners

Model KS



The Bolzoni Auramo wide opening KS model fork positioners are based on the clamp body frame and allows the forklift operator to position the forks beyond the original width of the forklift carriage, optimizing productivity by providing the safest handling of small, medium and extra-large loads.

The unique features of the attachment include:

- Excellent visibility
- Synchronized fork movement
- Use of standard FEM forks without any modification
- Possibility of handling Europallets from the narrow side
- Separate sideshift

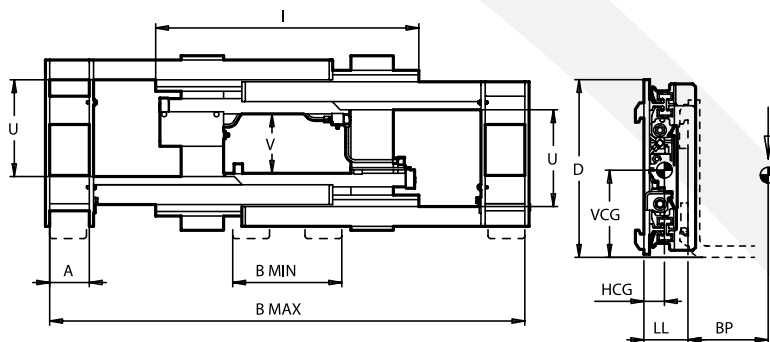
Also available in non sideshift version, KB model.



Fork Positioners, Clamp Based

Sideshifting wide opening fork positioners

Models KB / KS



- Series KB and KS fork positioners are based on a clamp frame, which allows the fork lift operator to position the forks beyond the original width of the forklift carriage.
- Safe handling of small, medium and extra-large loads.
- Series KB – Non-sideshifting.
- Series KS – Separate sideshift.
- Synchronized fork movement.
- ISO 2328 fork carriers. Possibility to use the standard forks of the lift truck.
- All standard models designed to handle Euro pallets from side 800 mm
- Excellent visibility.

Model	Capacity	Load Centre	Opening Range	Frame Width	Height	Weight	Centre of Gravity Horizontal	Centre of Gravity Vertical	Effective Thickness	Fork Width	Hooks External Width	Central Visibility	Side Visibility	Ground Clearance	Mounting Class
	Q	BP	B	I	D	W	HCG	VCG	LL	A	G	V	U	P	ISO
	kg	mm	mm	mm	mm	kg	mm	mm	mm	mm ^①	mm	mm	mm	mm	2328

Sideshifting

KS14YKA	1400	500	560-1680	930	613	216	90	254	183	100-130	950	220	341	9	2
KS20YKA	2000	500	560-1680	930	613	219	90	254	185	100-130	950	220	341	9	2
KS25YKA	2500	500	560-1680	930	613	225	92	254	187	100-130	950	220	341	9	2
KS28YKB	2800	500	560-1720	970	715	321	121	282	226	130-150	920	270	383	20	3
KS38YKB	3800	500	560-1950	1200	715	350	121	282	226	130-150	920	270	383	20	3
KS50YKC	5000	600	560-1810	1250	920	610	118	282	260	150-200	1200	210	230	20	4

Non-sideshifting

KB14YKA	1400	500	560-1680	930	613	173	72	234	153	100-130	750	220	341	9	2
KB20YKA	2000	500	560-1680	930	613	176	72	234	155	100-130	750	220	341	9	2
KB25YKA	2500	500	560-1680	930	613	180	73	234	157	100-130	750	220	341	9	2
KB28YKB	2800	500	560-1720	970	715	250	85	249	190	130-150	750	270	383	20	3
KB38YKB	3800	500	560-1950	1200	715	278	85	249	190	130-150	750	270	383	20	3
KB50YKC	5000	600	560-1810	1250	920	520	97	249	218	150-200	1050	210	230	20	4

Load backrest available on request.

Special opening ranges available on request.

① For other fork carrier and fork widths, please consult Bolzoni Auramo.